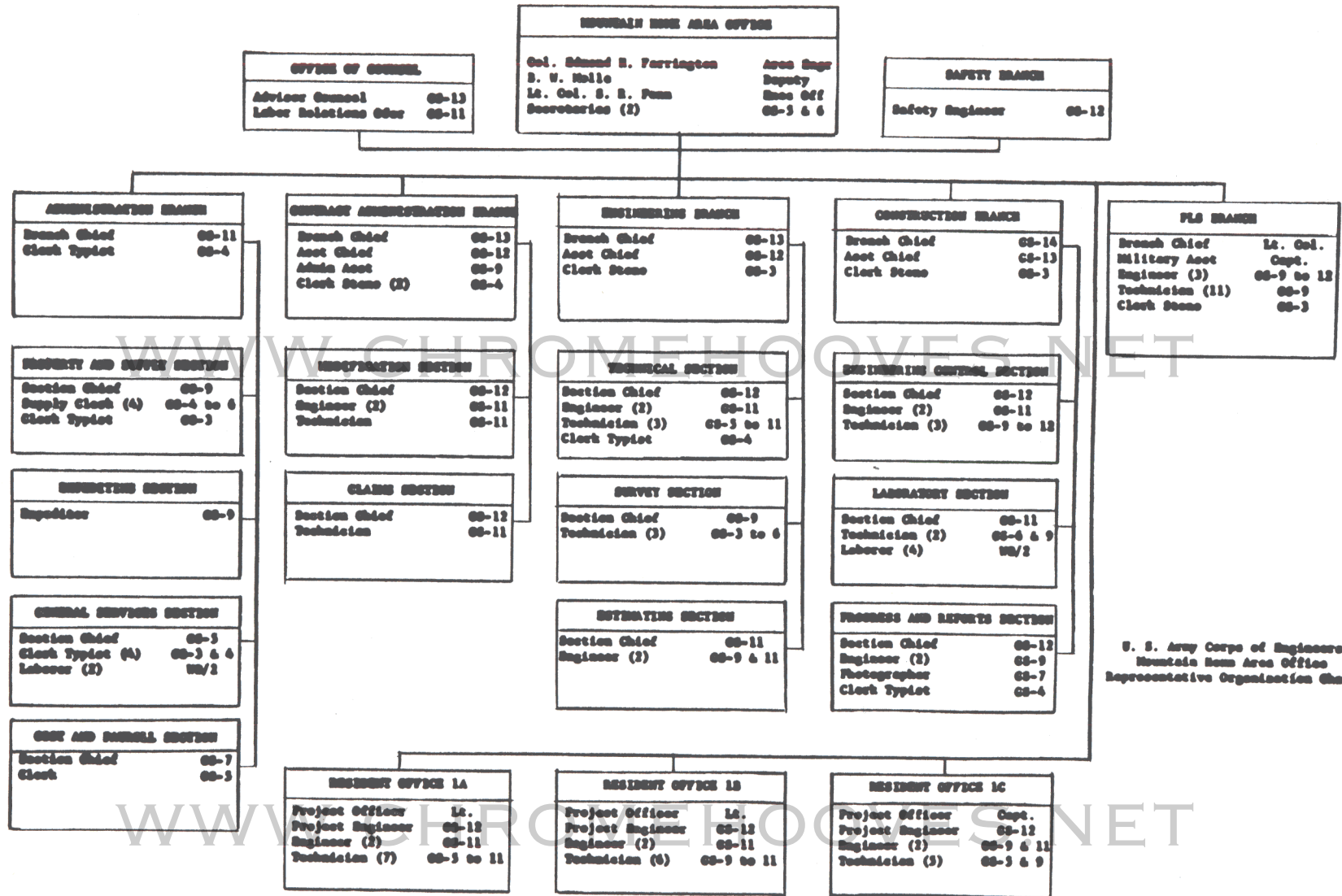


GOVERNMENT PERSONNEL

PERMANENT ASSIGNMENT

<u>MONTH</u>	<u>CIV.</u>	<u>MIL.</u>
Oct 1960	87	3
Nov 1960	91	5
Dec 1960	104	5
Jan 1961	109	7
Feb 1961	112	7
Mar 1961	112	7
Apr 1961	114	7
May 1961	115	8
Jun 1961	116	8
Jul 1961	110	8
Aug 1961	110	7
Sep 1961	112	7
Oct 1961	114	7
Nov 1961	113	7
Dec 1961	105	7
Jan 1962	96	6
Feb 1962	87	6
Mar 1962	72	6
Apr 1962	55	6



WWW.CHROMEHOOVES.NET

BALLISTIC SYSTEMS DIVISION (BSD)  
Commander Maj Gen T P Gerrity  
Los Angeles X1051

DEPUTY FOR SITE ACTIVATION  
Brig Gen A C Welling  
Los Angeles X1896

SITE ACTIVATION TASK FORCE (SATAF)  
Det 13 Mr. Wynn AFB  
Commander Col Harmon F. Stone X2211  
Deputy Lt Col R L. Lawke X6172

WWW.CHROMEHOOVES.NET

DIRECTOR  
PROGRAM MANAGEMENT  
Maj Henderson X6130

DIRECTOR  
ADMINISTRATIVE SERVICES  
Capt Wilder X6135

DIRECTOR  
FIELD OPERATIONS  
Lt Col Bell X6139

DEPUTY FOR  
BALLISTICS  
Lt Col Newman X6101

Logistics Branch  
Maj Crull X6105

Maintenance  
Engineering Branch  
Capt Stockbridge X6113

DEPUTY FOR  
CONTRACT ADMINISTRATION  
Lt Col Povich X6122

Industrial  
Property Branch  
T/Sgt Reeling X6159

Contract  
Administration Branch  
Lt Col Sharp X6181

Production Branch  
Lt Col Moore X6165

Quality Branch  
Capt Wood X6164

Labor Relations  
Branch  
Mr. Chambers X6121

DEPUTY FOR  
COMMUNICATIONS  
Maj Fabian X6171

DEPUTY FOR  
ENGINEERING  
Lt Col Jackson X6089

Facilities  
Engineering Branch  
Capt Stout X6096

Weapon System  
Engineering Branch  
Capt Hayes X6097

DEPUTY FOR  
CONSTRUCTION  
Lt Col [Name] X6138

Construction  
Branch  
Maj [Name] X6138

Contract  
Administration  
Branch  
Maj [Name] X6138

Construction  
Branch  
Maj [Name] X6138

WWW.CHROMEHOOVES.NET

FACILITY TURN-OVER DATES

Tabulation of Dates Upon Which Principal Facilities Were

Turned Over to Air Force on ENG Form 290

Facility	Complex A	Complex B	Complex C
<b>Missile Silos</b>			
No. 1 Complete Except PLS Test	31 Jan 62	19 Jan 62	22 Dec 61
No. 2 Complete Except PLS Test	31 Jan 62	18 Jan 62	16 Oct 61
No. 3 Complete Except PLS Test	31 Jan 62	8 Jan 62	22 Dec 61
<b>Propellant Terminals (Complete)</b>			
No. 1	26 Feb 62	27 Feb 62	25 Jan 62
No. 2	**19 Mar 62	14 Feb 62	27 Dec 61
No. 3	9 Mar 62	23 Feb 62	27 Jan 62
<b>Equipment Terminals</b>			
No. 1	8 Dec 61	17 Nov 61	23 Oct 61
No. 2	8 Dec 61	17 Nov 61	5 Oct 61
No. 3	7 Dec 61	17 Nov 61	17 Nov 61
<b>Control Center</b>	15 Sep 61	18 Aug 61	*31 Jul 61
<b>Powerhouse</b>	9 Feb 62	22 Dec 61	17 Nov 61
<b>Portal Silo</b>	20 Jan 62	6 Dec 61	22 Nov 61
<b>Antenna Silos</b>	8 Dec 61	2 Dec 61	4 Dec 61
<b>Air Filtration Structure</b>	24 Jan 62	19 Dec 61	6 Dec 61
<b>Type A Tunnels</b>	16 Feb 62	24 Jan 62	3 Jan 62
<b>Type B Tunnels</b>	9 Oct 61	15 Sep 61	15 Sep 61

\* First Turn-over

\*\* Last Turn-over

FACILITY ACCEPTANCE

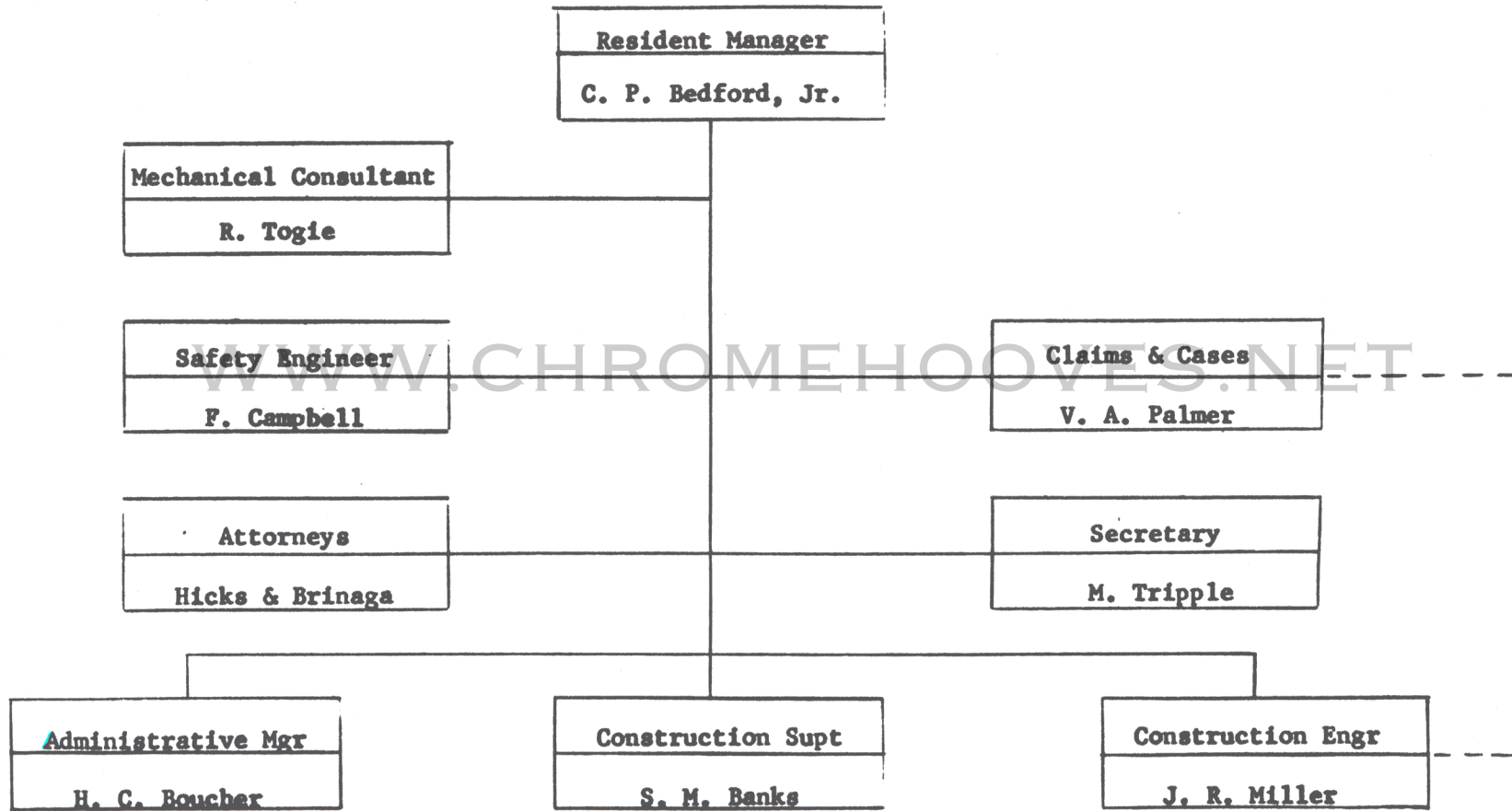
Tabulation of Dates Upon Which Principal Facilities Were  
Accepted from the Contractor as Essentially Complete

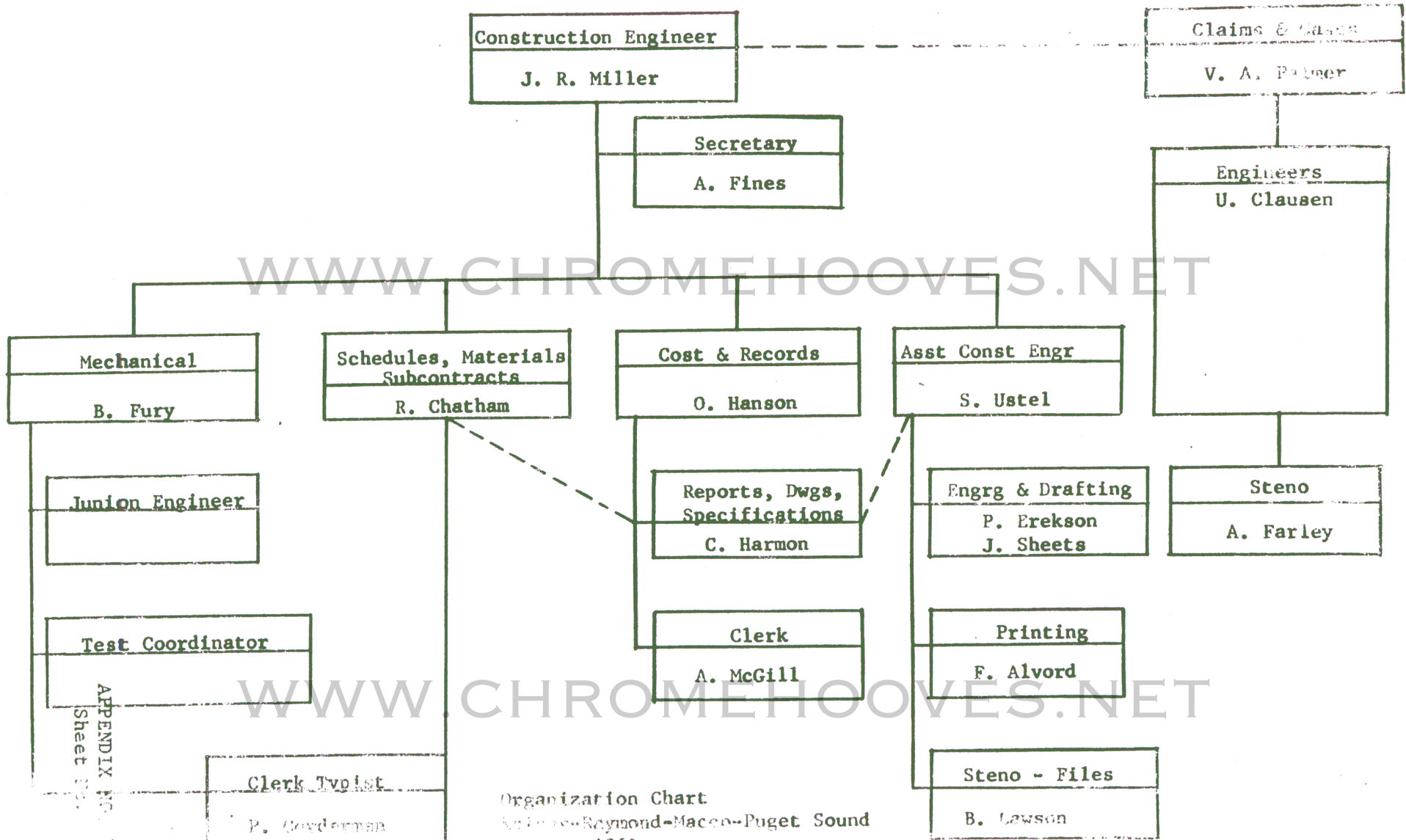
Facility	Complex A	Complex B	Complex C
<b>Missile Silos</b>			
No. 1 Complete Except PLS Test	9 Jan 62	26 Dec 61	8 Dec 61
No. 2 Complete Except PLS Test	23 Jan 62	21 Dec 61	29 Sep 61
No. 3 Complete Except PLS Test	15 Jan 62	22 Dec 61	12 Dec 61
<b>Propellant Terminals (Complete)</b>			
No. 1	22 Feb 62	23 Feb 62	17 Jan 62
No. 2	13 Mar 62	12 Feb 62	23 Jan 62
No. 3	7 Mar 62	21 Feb 62	25 Jan 62
<b>Equipment Terminals</b>			
No. 1	27 Nov 61	1 Nov 61	14 Oct 61
No. 2	10 Nov 61	25 Oct 61	29 Sep 61
No. 3	16 Nov 61	13 Oct 61	20 Oct 61
<b>Control Center</b>	1 Sep 61	15 Aug 61	5 Jul 61
<b>Powerhouse</b>	12 Dec 61	30 Nov 61	1 Nov 61
<b>Portal Silo</b>	4 Jan 62	7 Nov 61	9 Nov 61
<b>Antenna Silos</b>	4 Dec 61	8 Nov 61	10 Nov 61
<b>Air Filtration Structure</b>	21 Dec 61	16 Nov 61	21 Nov 61
<b>Type A Tunnels</b>	18 Jan 62	1 Dec 61	9 Dec 61
<b>Type B Tunnels</b>	12 Sep 61	10 Aug 61	21 Jul 61

REVISED CONTRACT COMPLETION DATES

Tabulation of Revised Dates Upon Which Principal Facilities  
Were Required to be Complete

Facility	COMPLEX A	COMPLEX B	COMPLEX C
Missile Silos (Except PLS Test)	23 Jan 62	26 Dec 61	12 Dec 61
Propellant Terminals (Complete)	1 Apr 62	1 Mar 62	1 Feb 62
Equipment Terminals	27 Nov 61	1 Nov 61	20 Oct 61
Control Center	5 Sep 61	15 Aug 61	5 Jul 61
Powerhouse	12 Dec 61	30 Nov 61	1 Nov 61
Portal Silo	4 Jan 62	7 Nov 61	9 Nov 61
Antenna Silos	21 Nov 61	18 Oct 61	17 Oct 61
Air Filtration Structure	21 Dec 61	16 Nov 61	21 Nov 61
Type A Tunnels	18 Jan 62	1 Dec 61	9 Dec 61
Type B Tunnels	12 Sep 61	10 Aug 61	21 Jul 61
Total Complex	1 Apr 62	1 Mar 62	1 Feb 62

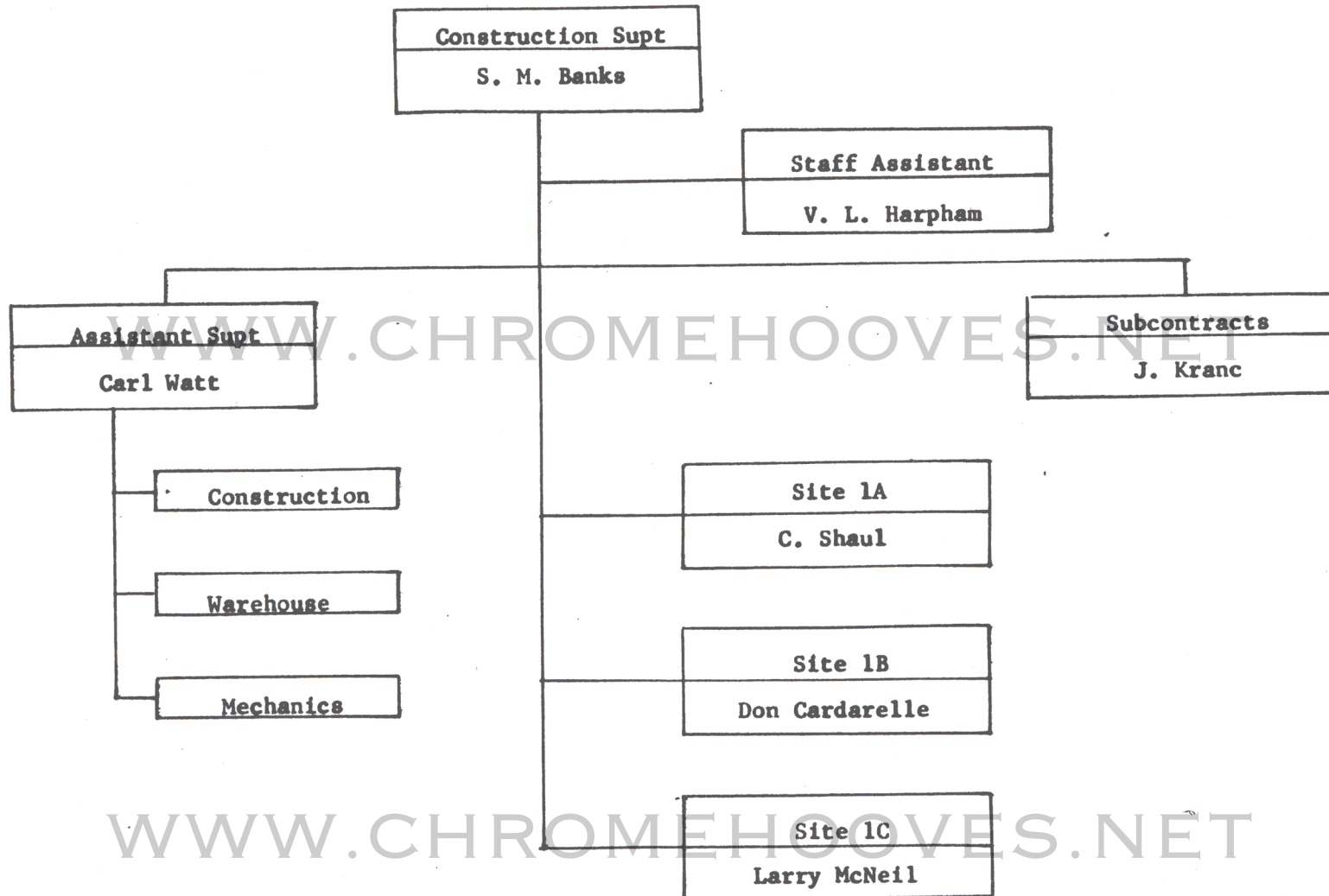




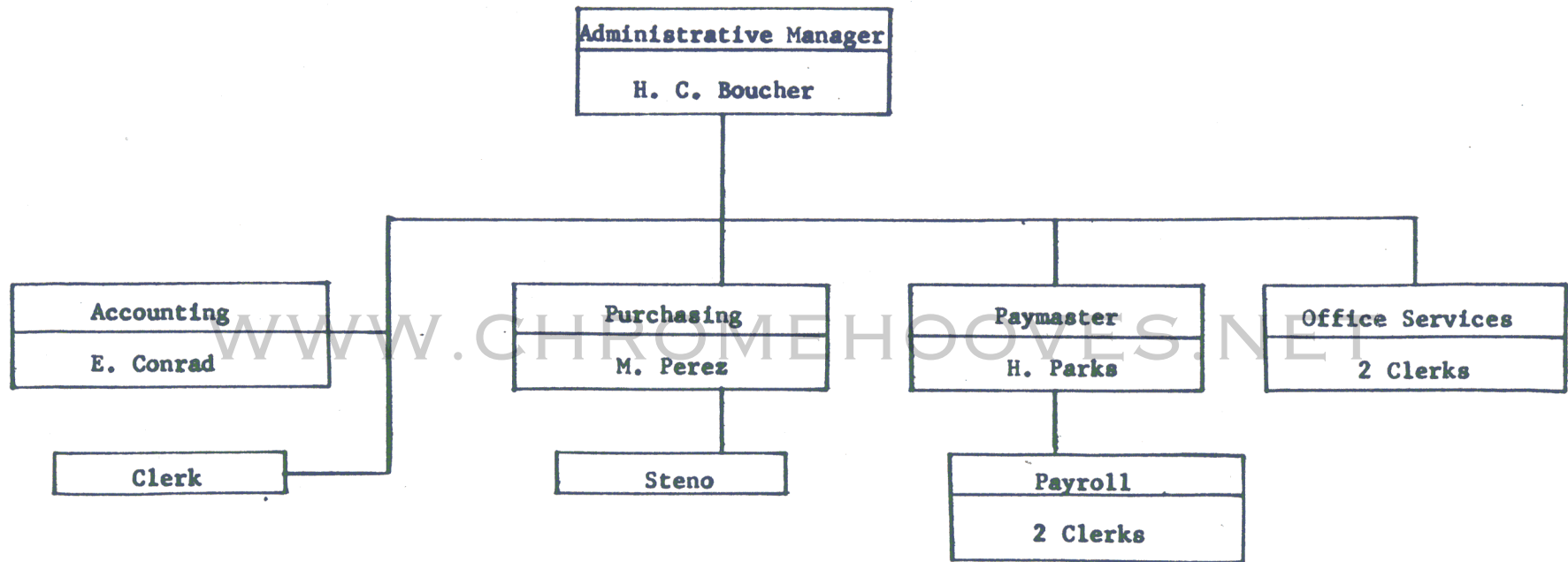
Organization Chart  
Raymond-Macco-Puget Sound  
1951

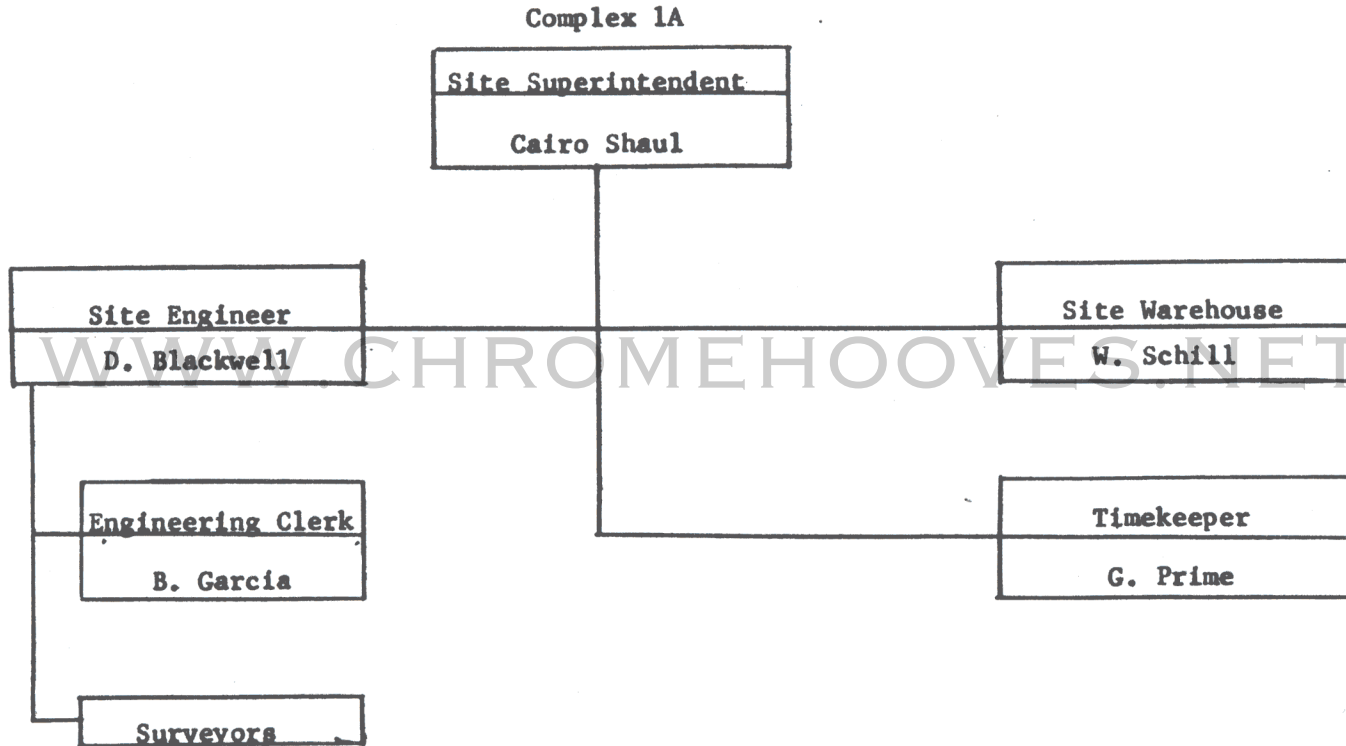
APPENDIX NO. 1  
Sheet 12

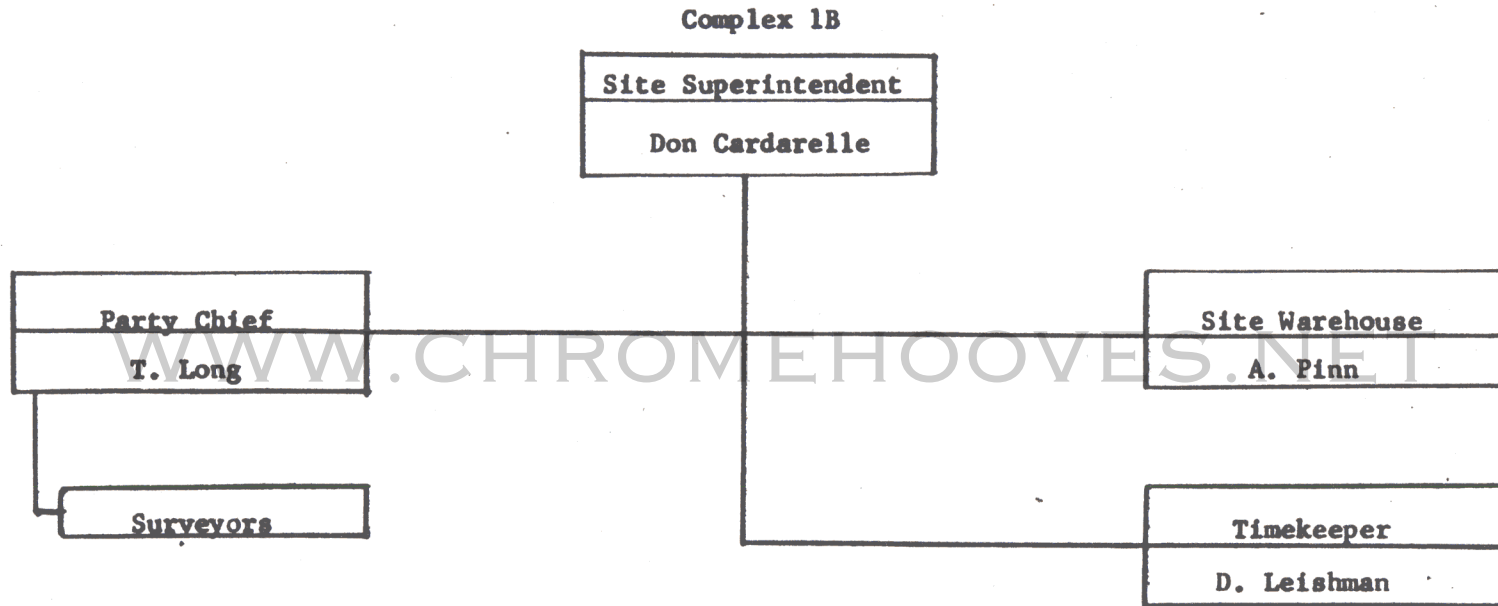


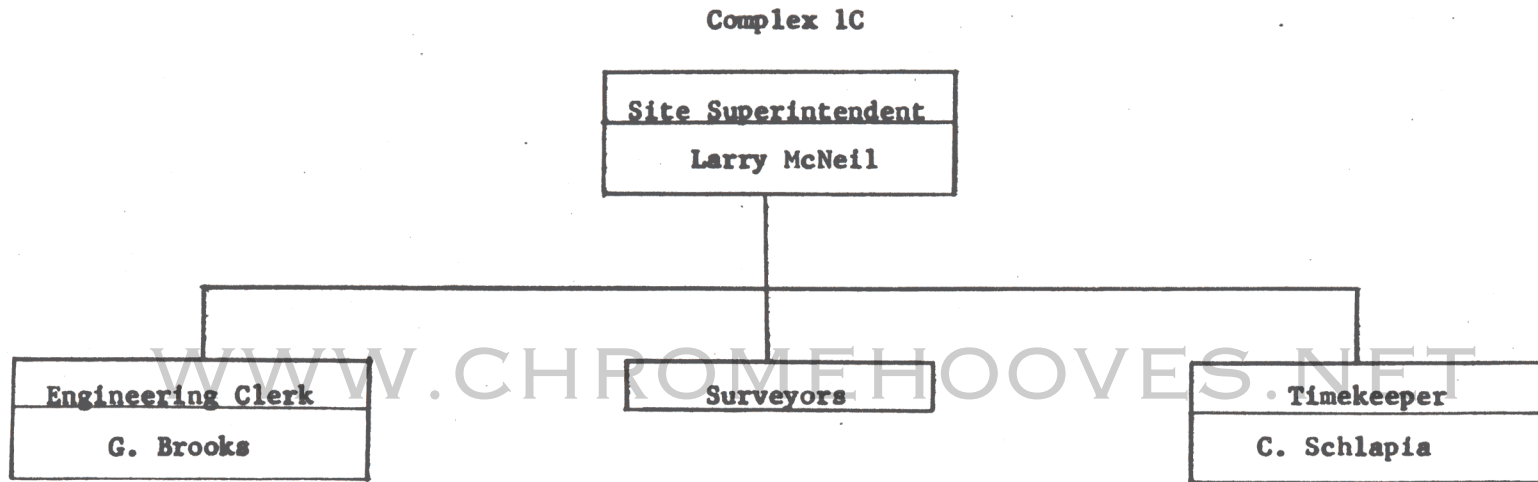


Organization Chart  
Kaiser-Raymond-Macco-Puget Sound  
26 July 1961









Organization Chart  
Kaiser-Raymond-Macco-Puget Sound  
26 July 1961

SUBCONTRACTOR DATA

<u>Subcontractor</u>	<u>Approximate Amount</u>	<u>Work Performed</u>
GILMORE-SKOUBYE STEEL CONTRACTORS 8275 San Leandro Street Oakland 21, California  (SUBS TO GILMORE-SKOUBYE)	\$2,800,000	Furnishing and installing reinforcing steel.
Gem State Fabricators, Inc. 2902 Fletcher Street Boise, Idaho		Furnish labor, plant and Equipment to handle, shear and fabricate reinforcing steel and do printing of shop detail drawings.
The Manad Company Sacramento, California		Prepare all shop detail and field placement drawings for fabrication and installation of reinforcing steel.
WELLS CARGO, INC. Box 430, D-4-C Las Vegas, Nevada	1,332,000	Earthwork.
NORTHWEST CONSTRUCTION 3744 Mt. View Drive Boise, Idaho	13,000	Furnishing and installing temporary fencing.
GRAFE-WEEKS CORPORATION 342 Grant Building Pittsburgh, Pennsylvania  (SUBS TO GRAFE-WEEKS)	7,418,000	Piping, plumbing and heating, ventilation and air conditioning, etc.
Johnson Service Company 1193 South 3rd Street West Salt Lake City 1, Utah	(100,000)	Ventilation Contrals.
Montefusco Heating & Sheet Metal Co. 1615 S. W. Adams Peoria, Illinois	(200,000)	Ventilation, air conditioning and heating.

<u>Subcontractor</u>	<u>Approximate Amount</u>	<u>Work Performed</u>
Alliance Mechanical Contractors, Inc. 5801 West Jefferson Blvd. Los Angeles 16, Calif.	\$(1,700,000)	Plumbing.
B & B Engineering & Supply P. O. Box 5092, Terminal Annex Denver, Colorado	(200,000)	Furnishing thermal insulation and related service.
St. Maries Plumbing & Heating & Federal Joint Bealing Co. East 3527 Mora Spokane, Washington		Drilling of Holes - Under Case 78 in Missile Silos and Propellant Terminals.
Tidmarsh Ventures, Inc. 425 South Plumber Tucson, Arizona	(200,000)	Testing of Propellant Systems.
Early Engineering Corp., Inc. 3921 Wilshire Boulevard Suit 410 Los Angeles, California		Sub to Tidmarsh Ven- tures, Inc.
BOISE CASCADE CONCRETE CO. Box 200 Boise, Idaho	1,457,000	Batching, furnishing and delivery of con- crete.
EL DORADO FENCE COMPANY Sparks, Nevada	51,000	Furnish and install all chain link fencing, gates, etc.
MACCO-JOHNSON WESTERN 14409 South Paramount Blvd. Paramount, California	162,000	Apply gunite to shafts.
WATER PUMP COMPANY Route 1 Boise, Idaho		Furnish and install 40 HP Western Pump, two 3,000 gal. pres- sure tanks, 100 HP Western Pump.
WEBER SHOWCASE & FIXTURE CO., INC. 5700 Avalon Blvd. Los Angeles, California	281,000	Furnish and install metal partitions, panels, door frames, etc.
A. NERI, INC. OF CALIFORNIA 678 Haganberger Blvd. Oakland 21, California	1,869,000	Electrical Work.

<u>Subcontractor</u>	<u>Approximate Amount</u>	<u>Work Performed</u>
OTIS ELEVATOR COMPANY 1 Beach Street San Francisco, California	455,000	Furnish and install elevators.
J. I. HAAS CO., INC. 51 East 42 Street New York 17, New York	143,000	Field painting work.
BOISE PAVING AND ASPHALT COMPANY Boise, Idaho		Dust Control of Excavated slopes at Sites B and C.
MOUNTAIN STATES ROOFING COMPANY 3204 Manner Avenue Boise, Idaho	8,400	Dampproofing.
POWELL HEATING & PLUMBING COMPANY P. O. Box 312 Mountain Home, Idaho		Temporary air and water facilities at three sites.
HANSEN-KASHNER P. O. Box 1784 Fresno, California	264,000	Slip forming of nine missile silos and pour of concrete therein.
THE PRELOAD COMPANY, INC. 355 Lexington Avenue New York 17, New York	65,000	Horizontal prestressed steel wire as concrete inserts required to assist in installation of post-tensioning operation of two control centers, Complexes B and C.
QUINN-ROBBINS COMPANY, INC. 703 Americana Blvd. Boise, Idaho	1,300	Installation of ceptic tanks.
RUTLEDGE BROS., INC. 1414 Idaho Street Boise, Idaho		Dampproofing Powerhouse, etc.
CENTURY METAL WORKS 7126 West Marginal Way Seattle 4, Washington	152,000	Furnish and install miscellaneous metal.



<u>Subcontractor</u>	<u>Approximate Amount</u>	<u>Work Performed</u>
ISAACSON IRON WORKS 8531 East Marginal Way Seattle 6, Washington	393,000	Furnish and install structural iron.
TRUCKING INC. c/o Wells Cargo, Inc. Mountain Home, Idaho	61,000	Furnish Trucks and drivers.
SUNSET FLOOR COVERING COMPANY P. O. Box 81 Boise, Idaho	5,000	Furnish and install resilient floor cover and bases.
ALLIED STEEL ERECTORS 2206 North Main Pocatello, Idaho		Furnish 35-ton truck cranes and operators.
R. V. BURGRAF & R. O. NELSON Joint Ventures P. O. Box 4246 Boise, Idaho	318,000	Soil stabilizing and paving.

WWW.CHROMEHOOVES.NET

WWW.CHROMEHOOVES.NET

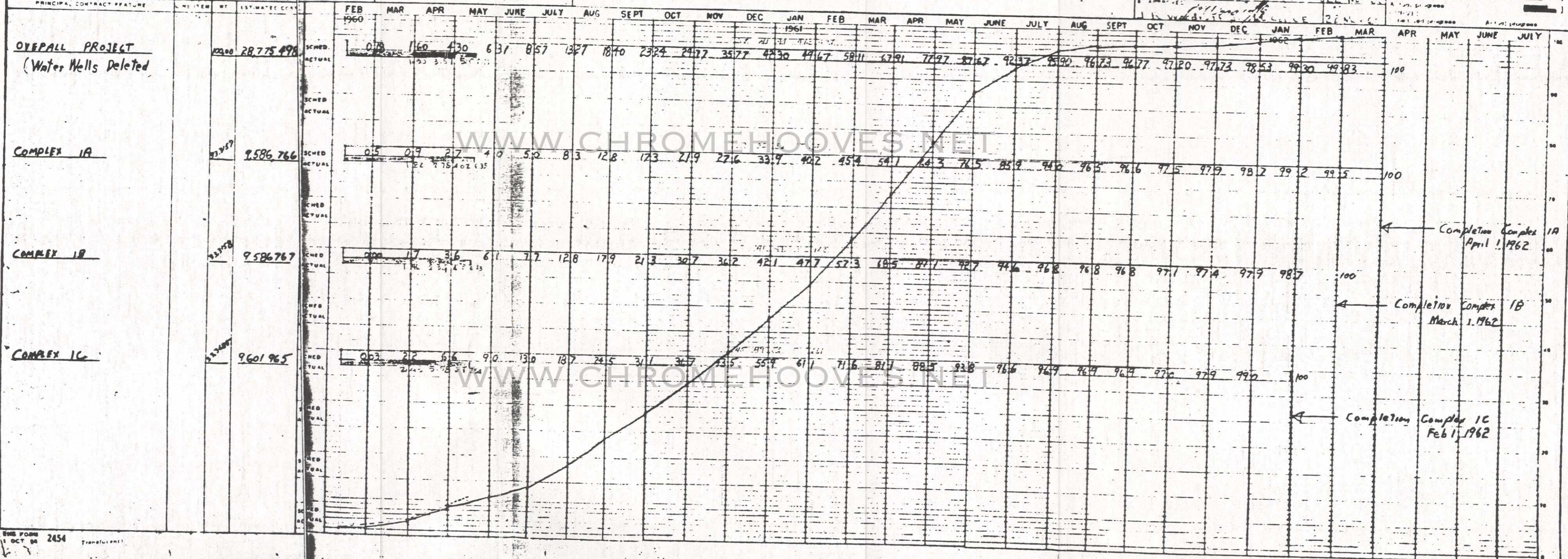
CONSTRUCTION PROGRESS CHART

Sheet 34

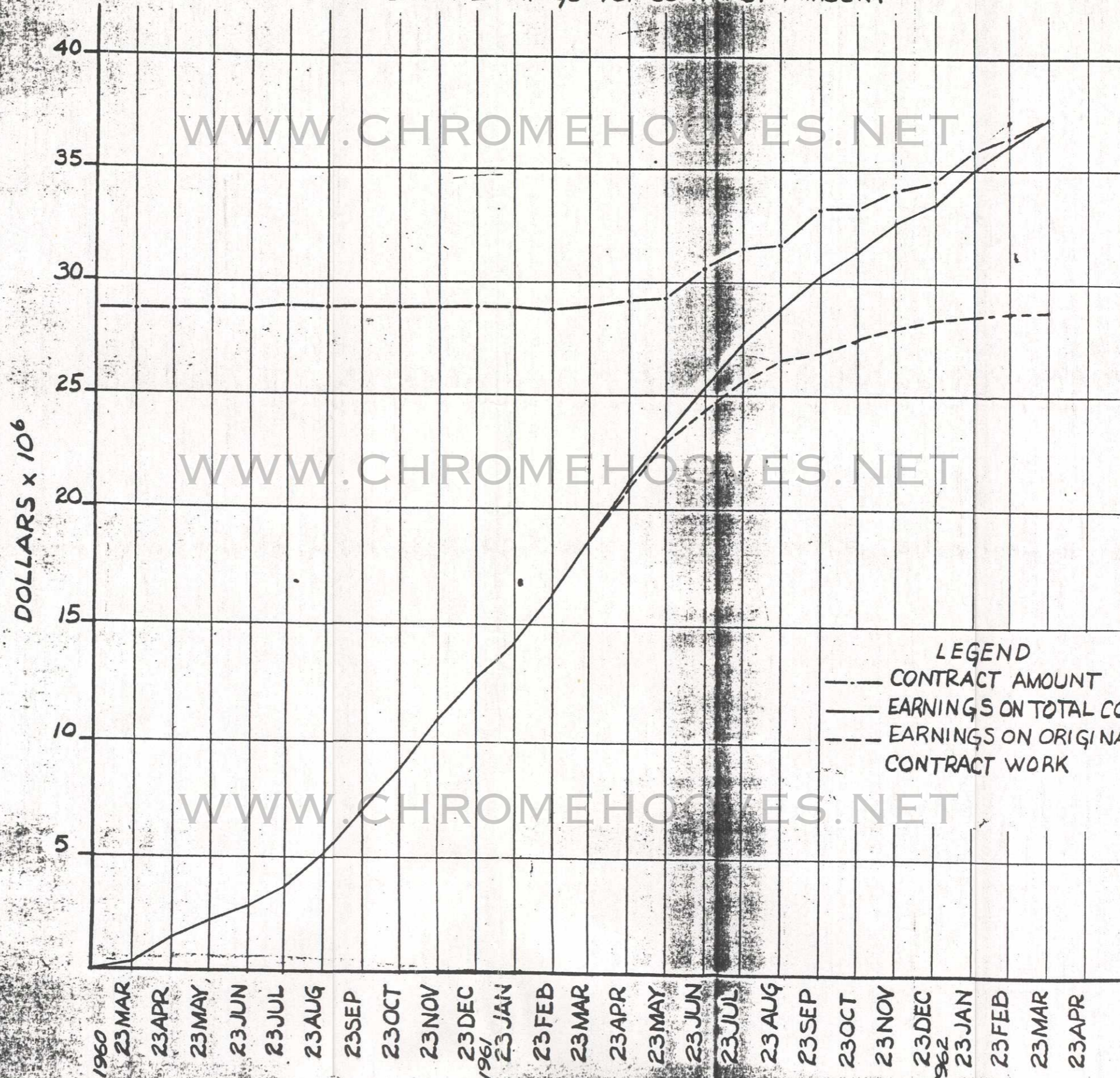
REPORTS CONTROL SYMBOL  
ENGM - 7

1. CONTRACTOR Kaiser-Raymond-Macco Puget Sound	2. PROJECT Technical Facility WS-107 A-2	3. CONTRACT DESCRIPTION Missile Complexes 1A, 1B & 1C
4. CONTRACT NUMBER DA-45 164-ENG- 565	5. LOCATION Mountain Home Air Force Base Mountain Home, Idaho	

6. SUBMITTED FOR APPROVAL 3/10	DATE
7. APPROVAL REQUIRED BY H. J. Mellen	DATE
8. APPROVAL DATE	DATE



DOLLAR EARNINGS VS. CONTRACT AMOUNT



LEGEND  
 - - - CONTRACT AMOUNT  
 ——— EARNINGS ON TOTAL CONTRACT  
 - · - · - EARNINGS ON ORIGINAL CONTRACT WORK

WWW.CHROMEHOVES.NET