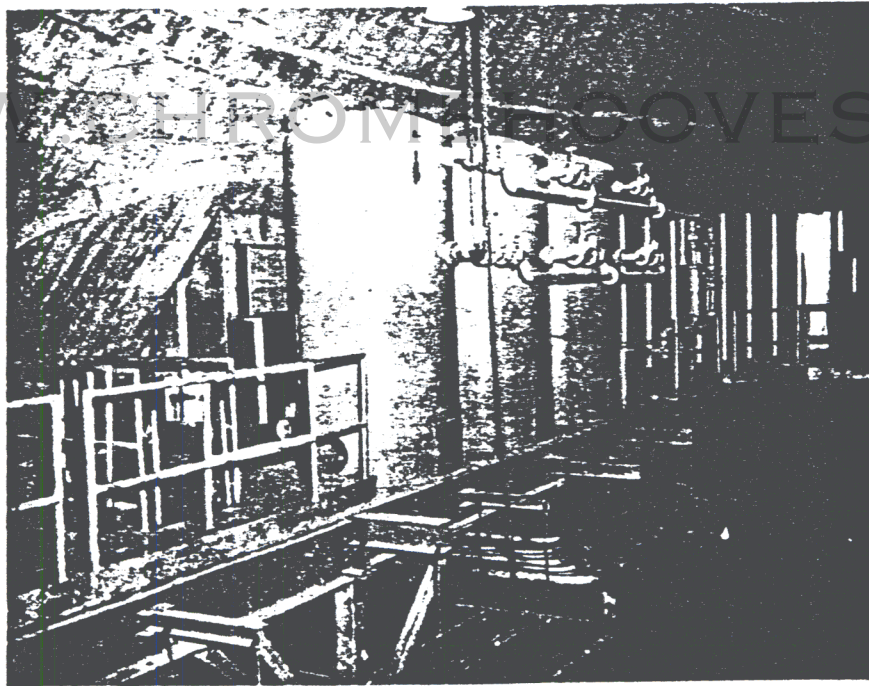
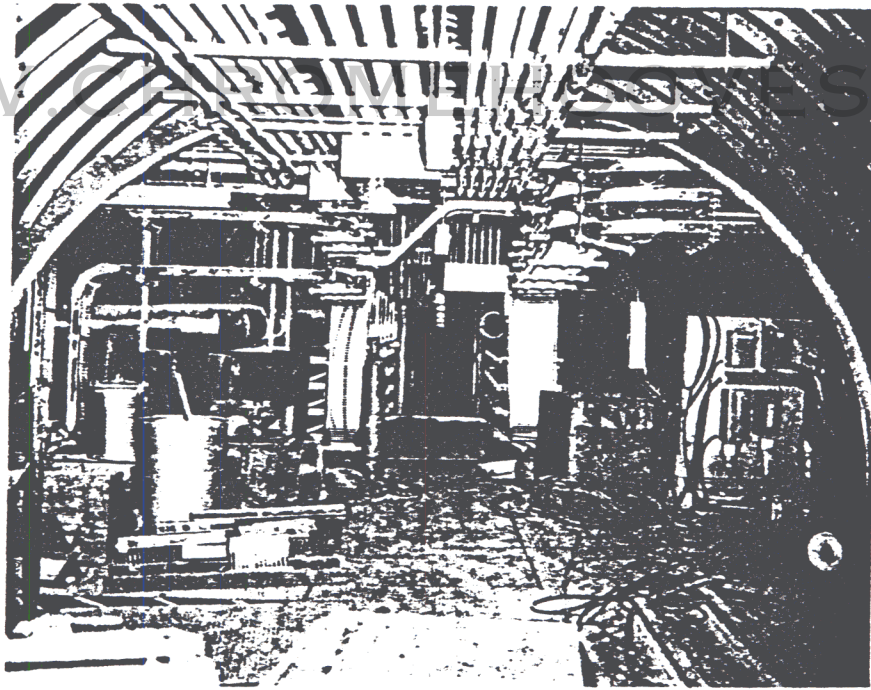


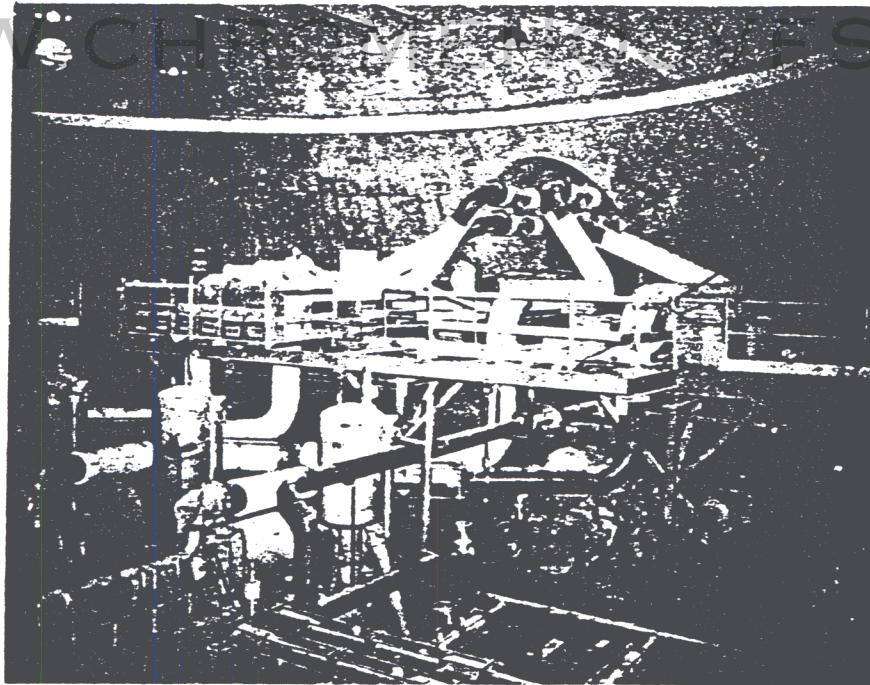
VIEW OF LOX CRIB IN MISSILE SILO. TUNNEL OPENING IN BACKGROUND LEADS TO PROPELLANT TERMINAL



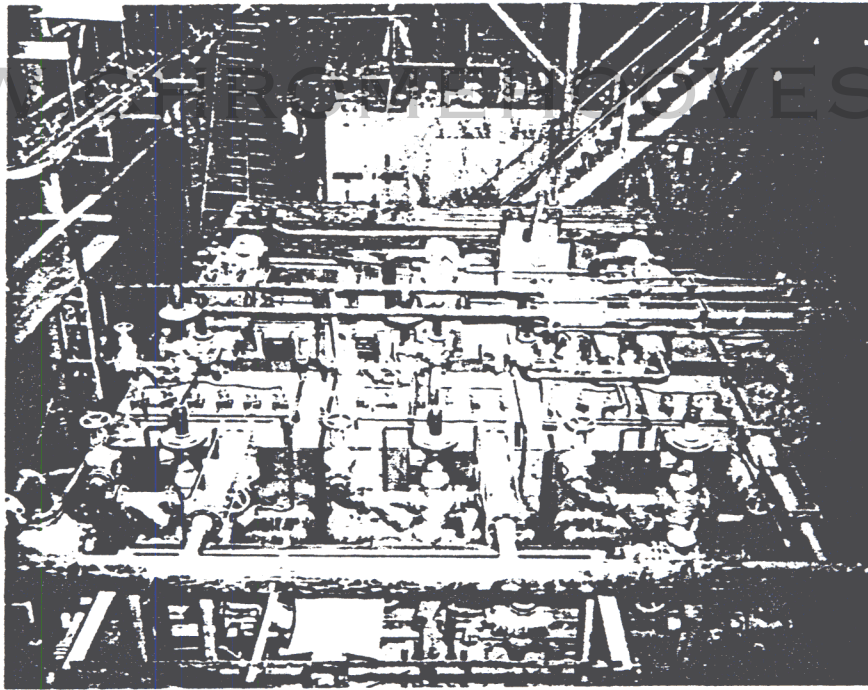
IRON RUST FILTER TANKS INSTALLED ON THE SECOND FLOOR OF POWERHOUSE



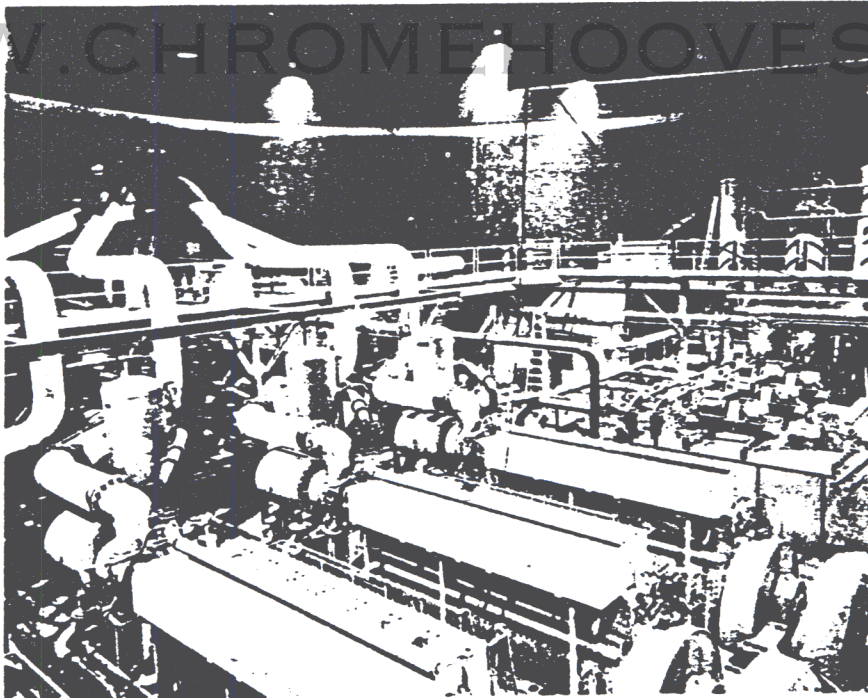
V I E W   L O O K I N G   T O W A R D   C O N T R O L   C E N T E R   S H O W I N G   C A B L E   T R A Y S  
A N D   C O N D U I T S



V I E W   S H O W I N G   D I E S E L   E N G I N E   E X H A U S T   P I P E S   W I T H   A S B E S T O S   C O V E R I N G  
B E I N G   I N S T A L L E D

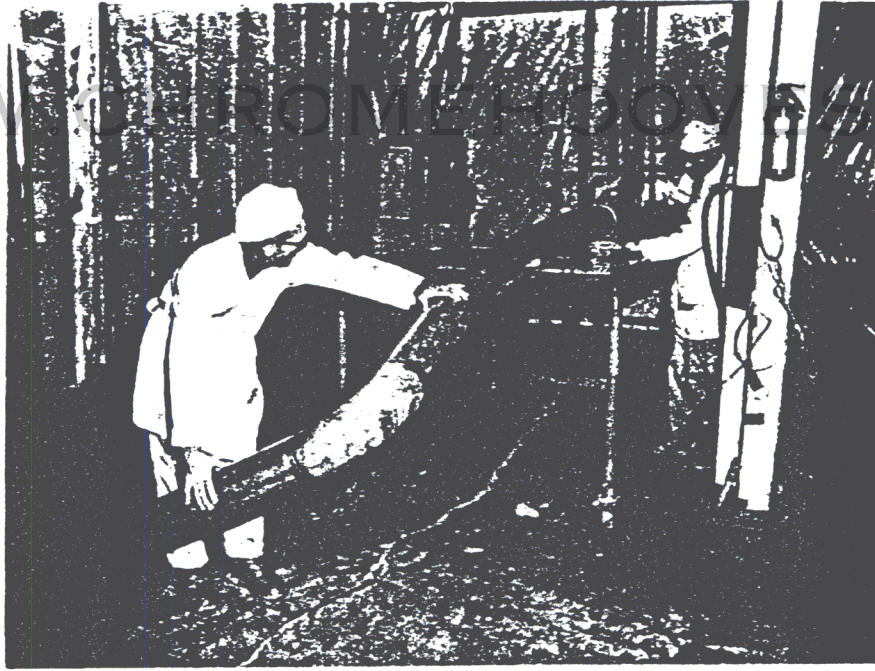


VIEW FROM SECOND FLOOR OF POWERHOUSE SHOWING ICE BANKS AND MISCELLANEOUS PIPING



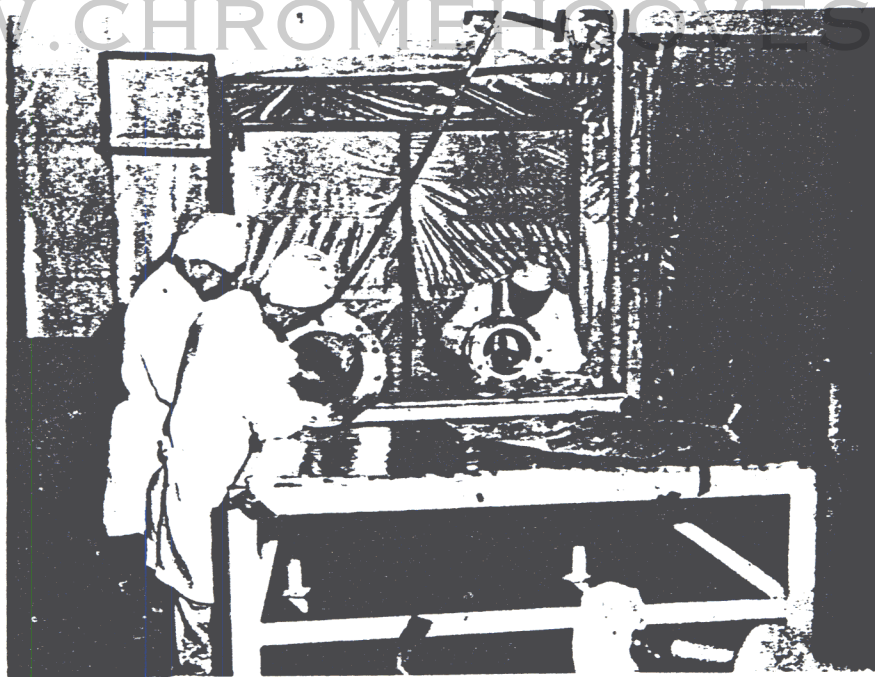
VIEW OF POWERHOUSE SHOWING DIESEL ENGINES, GENERATORS, AND EXHAUST SYSTEM





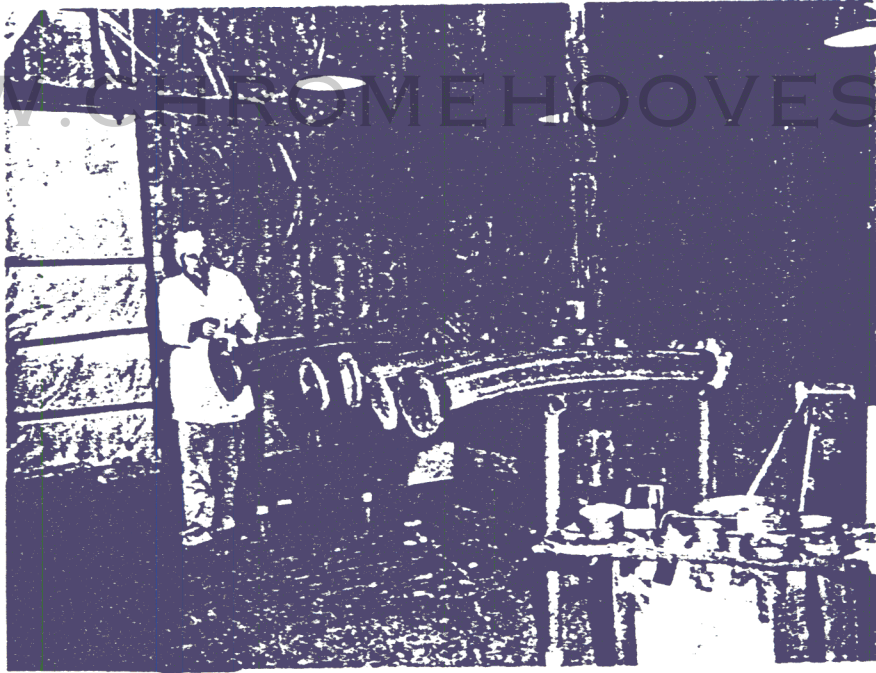
I Drying Room

Pipe being placed on table to be dried with clean hot filtered nitrogen gas.



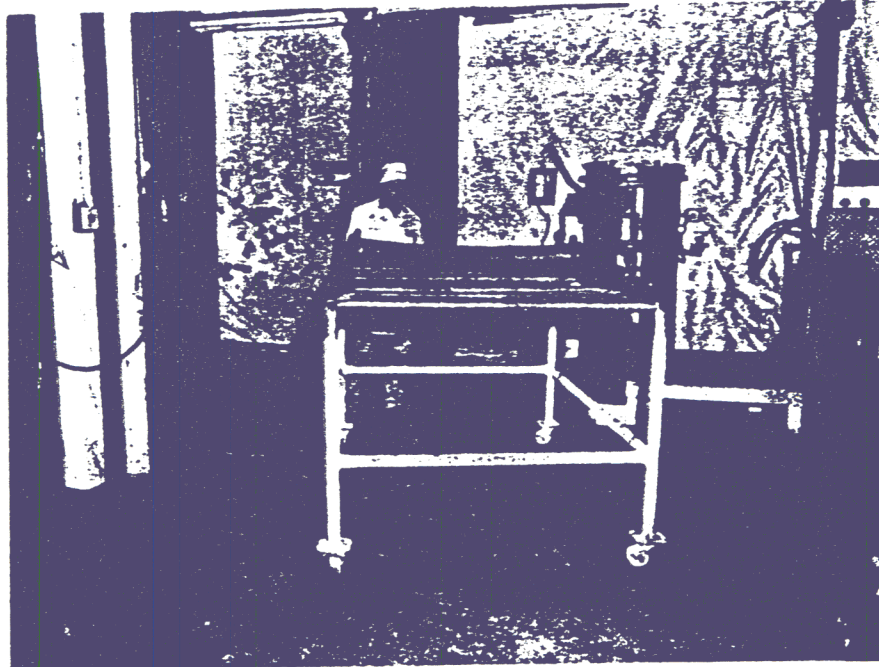
II Clean Room

Clean pipe being inspected for particles over 150 microns, hydrocarbons, defects or other requirements of the specifications.



III Wrapping Room

Clean pipe is protected with polyethylene gaskets and steel flanges for shipment to field.



IV Drying Room for Black Pipe

Workman drying flexible hose with supply of clean hot filtered nitrogen gas.

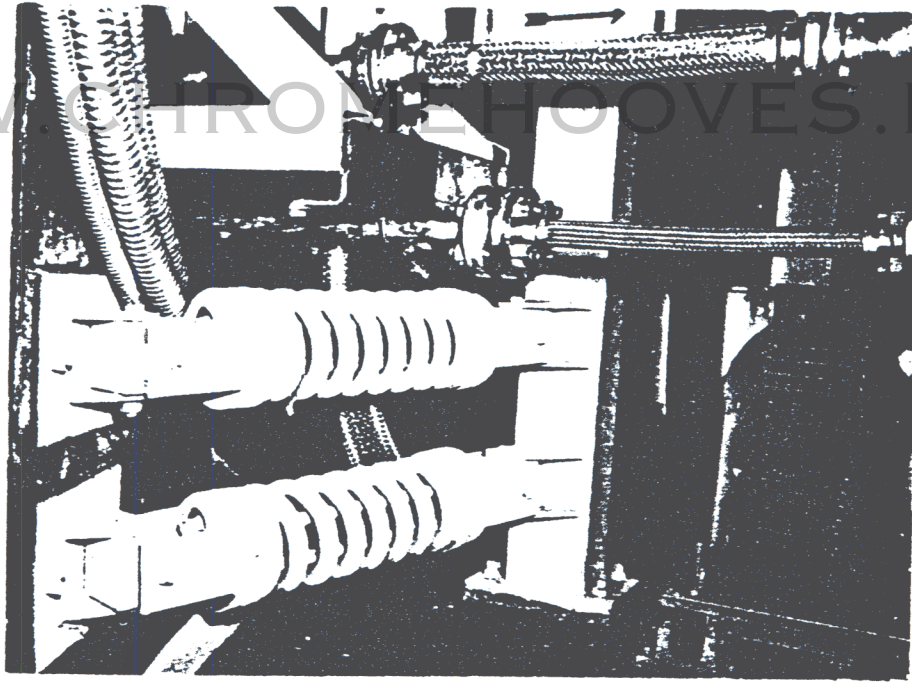


PLS installation in the propellant terminal showing support system for vent lines on upper floor.

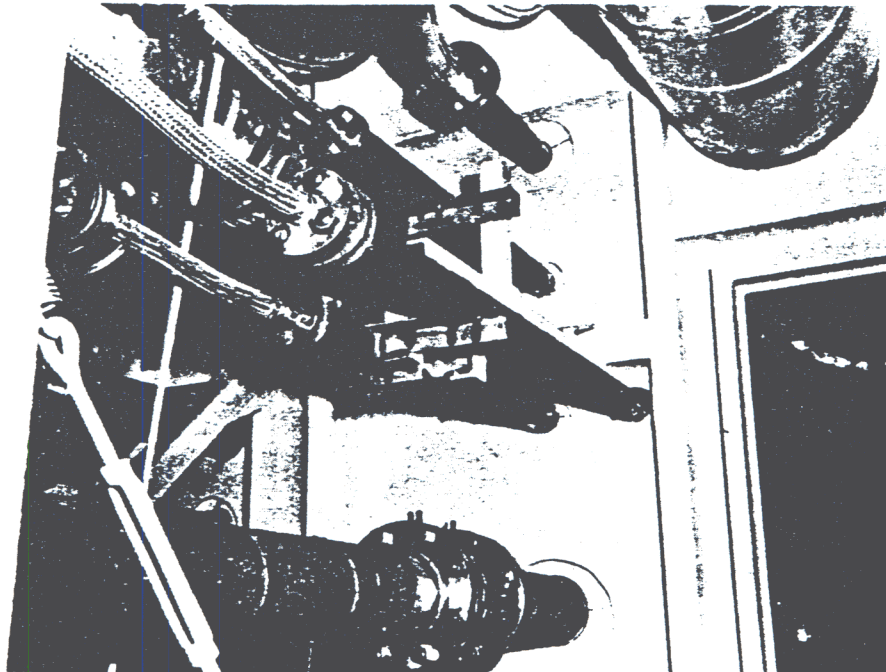


Welding pipe supports in propellant terminal on lower floor.

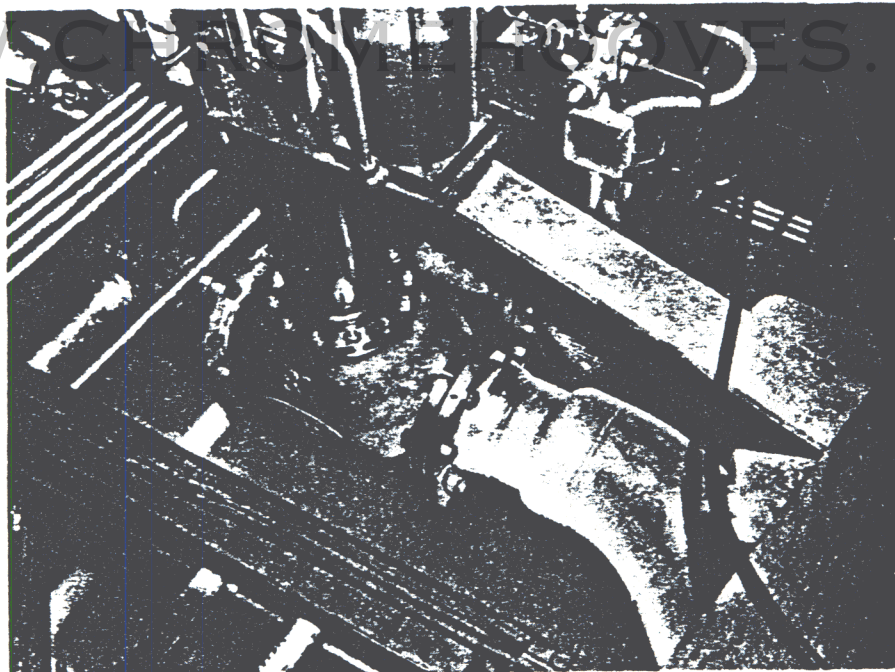




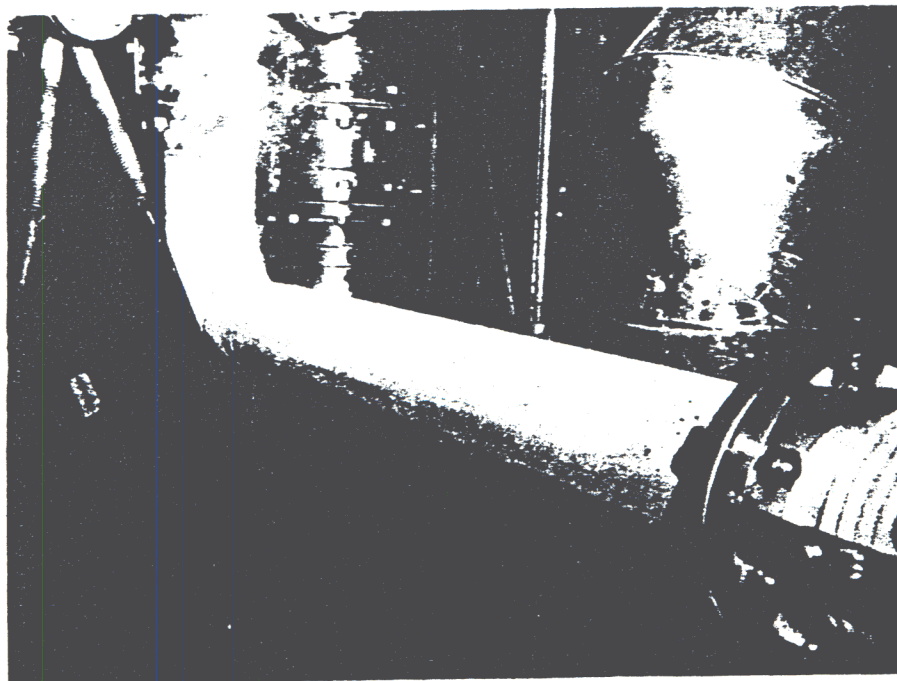
PLS installation on lower floor showing horizontal shock springs between propellant terminal wall and shock mounted column. Spring isolated air exhaust blower in right foreground.



PLS piping on lower floor of propellant terminal leading into lox tunnel. 8" lox loading line at bottom. Insulated topping lines above.

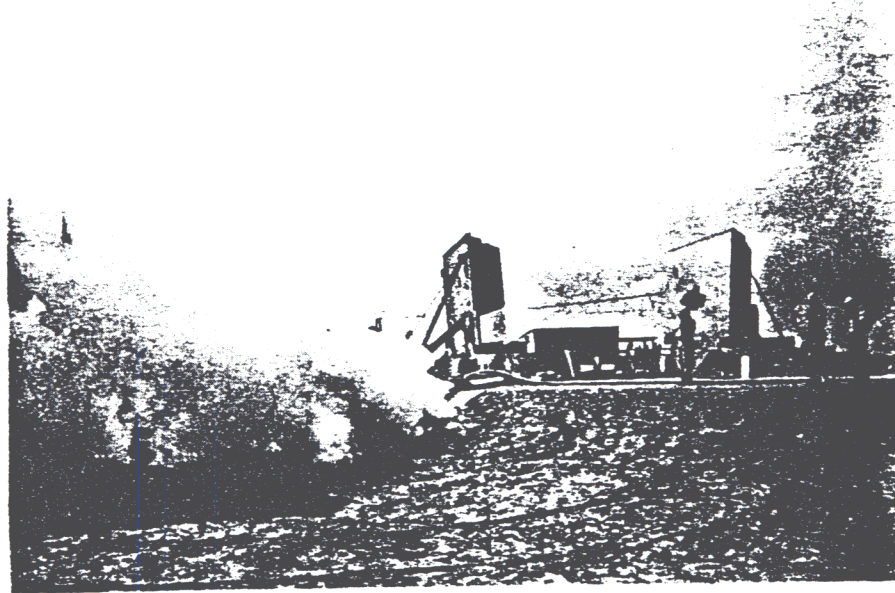


View of 8" lox loading flow control valve during liquid nitrogen cold flow testing. Upper floor of propellant terminal

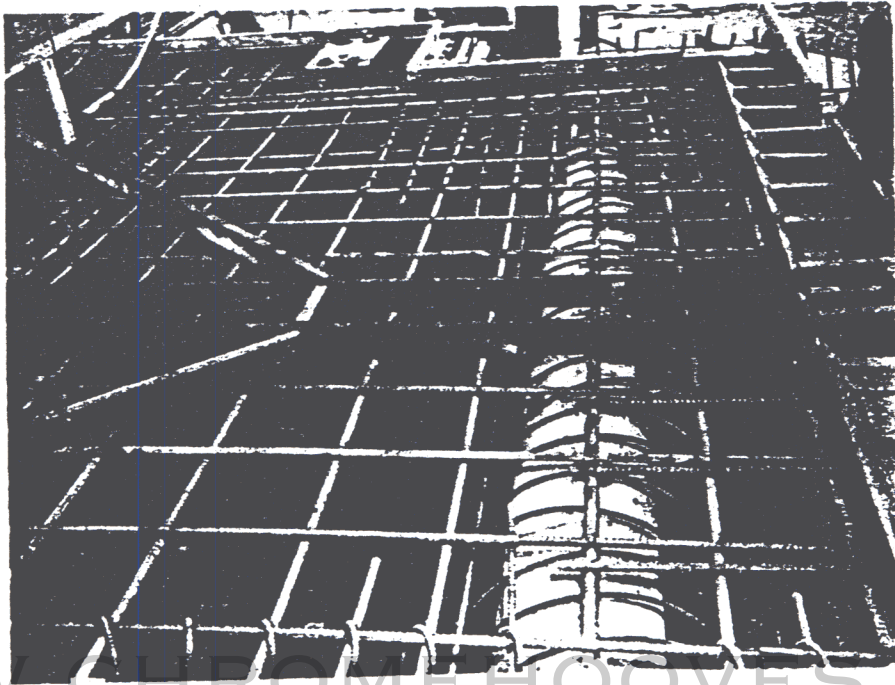


View showing 8" lox line under cold flow test at entrance to lox tunnel. Note gimble joints and circular aluminum air exhaust duct.



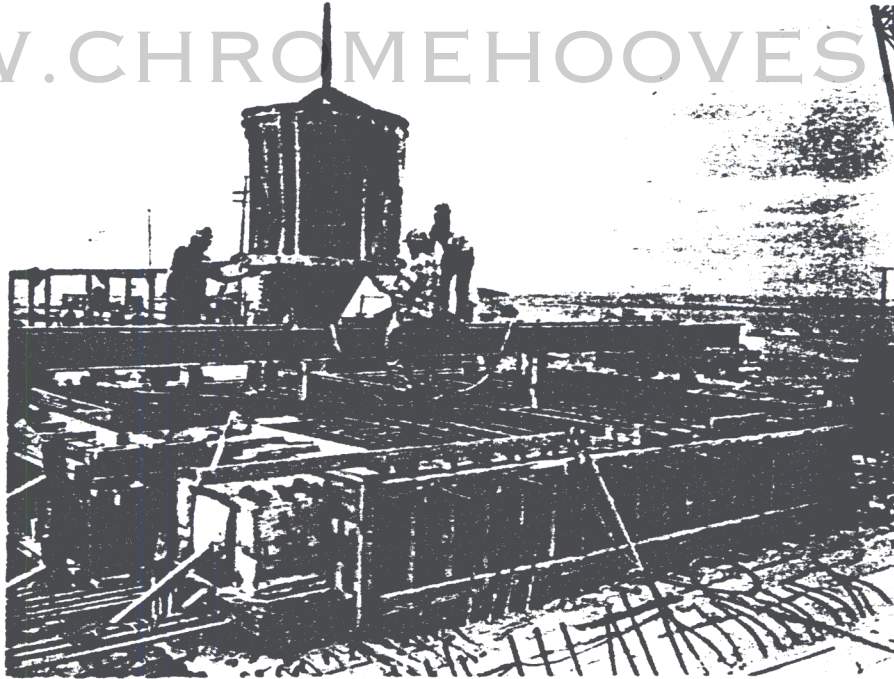


Liquid nitrogen "boil off" during cold flow tests at missile silo



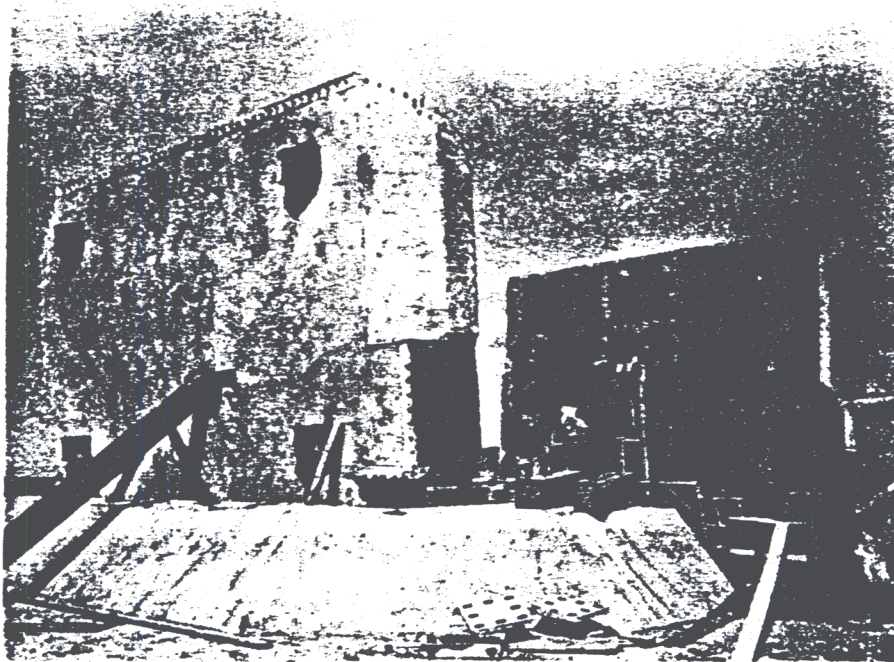
Forming and re-steel on missile silo door. Note hinge shaft.

WWW.CHROMEHOOVES.NET

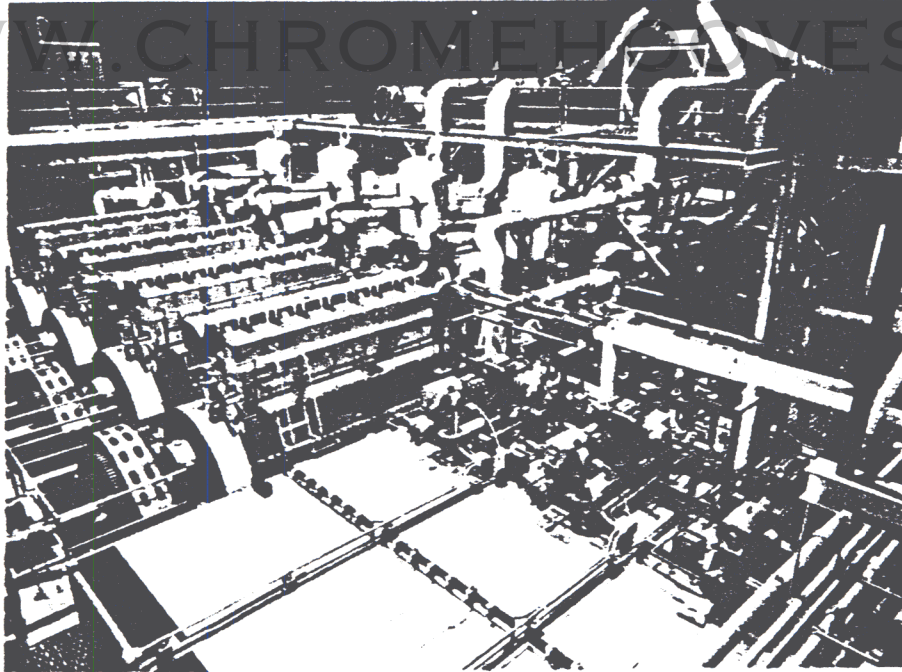


Placing concrete for missile silo door leaf.

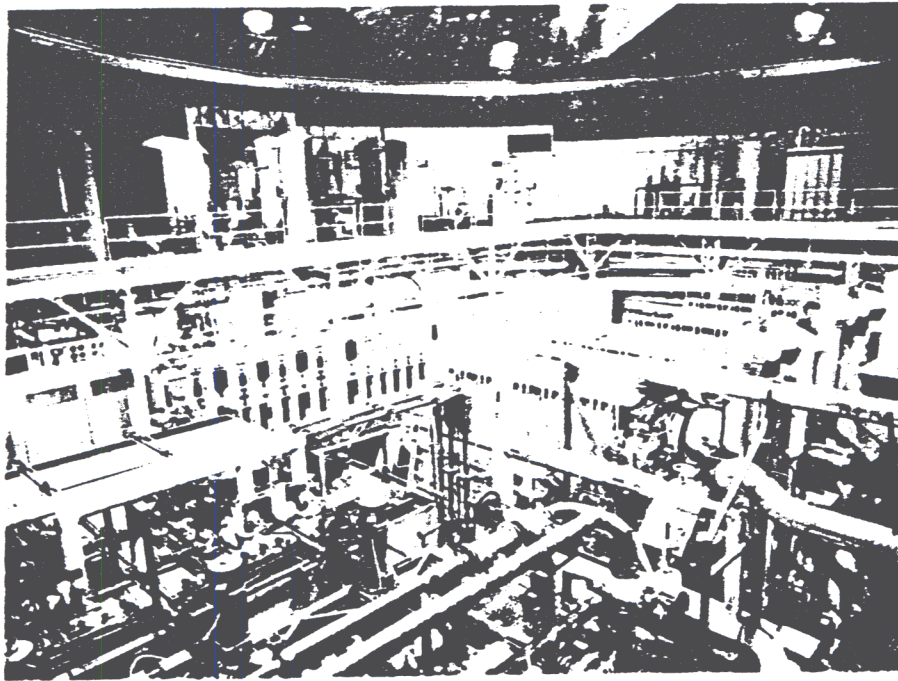
WWW.CHROMEHOOVES.NET



Missile silo doors immediately after raising. Each leaf weighs in excess of 110 tons.



View from mezzanine of powerhouse showing Worthington Diesel power units and exhaust system. Three unit ice bank refrigeration plant in foreground.



View from mezzanine of powerhouse showing ice banks, power plant and switchgear on first floor. Air, water and lube oil tanks on mezzanine floor.